

VERTICAL
SERIES CS
P U M P

*Vertical pump for PCB
wet process machines*



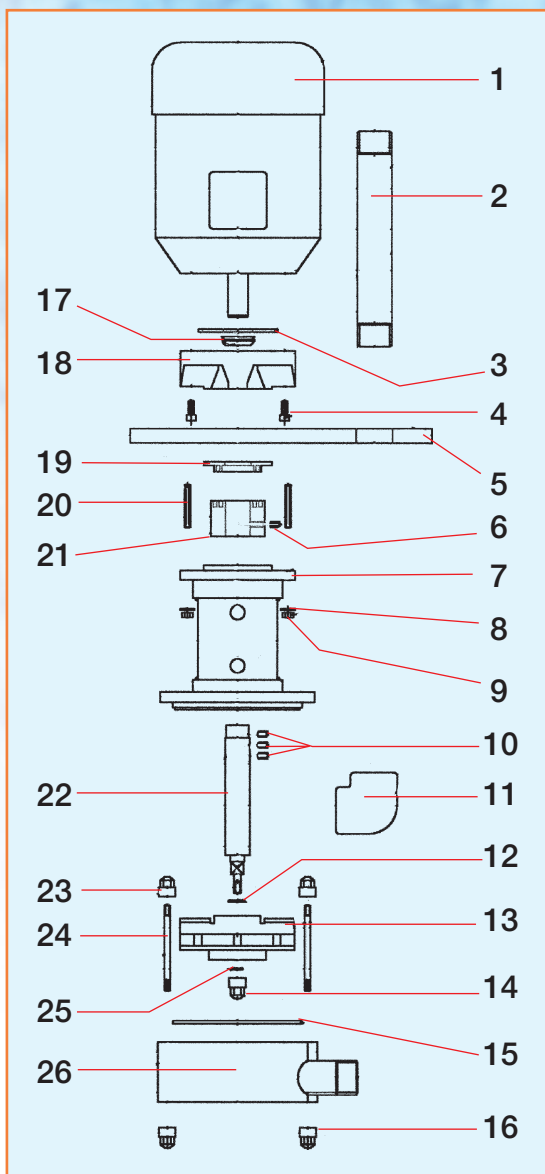
la fonte
srl.it

VERTICAL SERIES CS P U M P

Vertical pump for PCB wet process machines

Vertical pump series CS have been properly designed for wet process PCB machines application.

Actually the particular construction features as high pressure impeller design, pump shaft available in Inox AISI316, Titanium or Astelloy, fumes seal to protect motor make them ideal for application on these machines.



Pump Mod.	Motor Kw	Q max l/min.	H max m.	Outlet Attack mm.
V2B3PCSTILV	1,1	220	18	32
V3A1PCSTILV	1,5	380	20	40
V3A2PCSTILV	2,2	470	24	40
V3B1PCSTILV	3	550	26	50
V3B2PCSTILV	5,5	650	32	50



- | | |
|--------------------|-----------------------|
| 1 Motor | 14 Impeller cap |
| 2 Outlet pipe | 15 O-Ring |
| 3 PTFE disc | 16 Pump housing cap |
| 4 Screws TCCE 8x20 | 17 Viton V-Ring |
| 5 PP flange | 18 Fumes seal |
| 6 Grub screw | 19 Static labyrinth |
| 7 Pump body | 20 Tie rod |
| 8 Titanium washer | 21 Rotating labyrinth |
| 9 Titanium nut | 22 Titanium shaft |
| 10 Grub screw | 23 Pump housing nut |
| 11 Elbow | 24 Titanium tie rod |
| 12 O-Ring | 25 O-Ring |
| 13 Impeller | 26 Pump housig |

Please contact us for additional technical details.