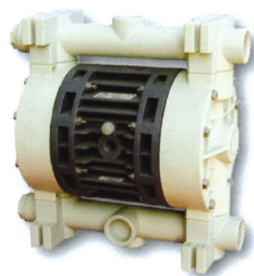


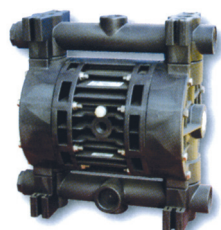
# POMPE A MEMBRANA

## DIAPHRAGM PUMPS

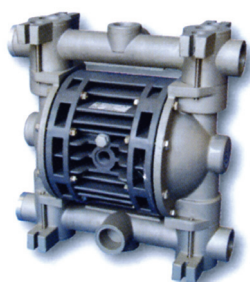
# BX15 - BX26



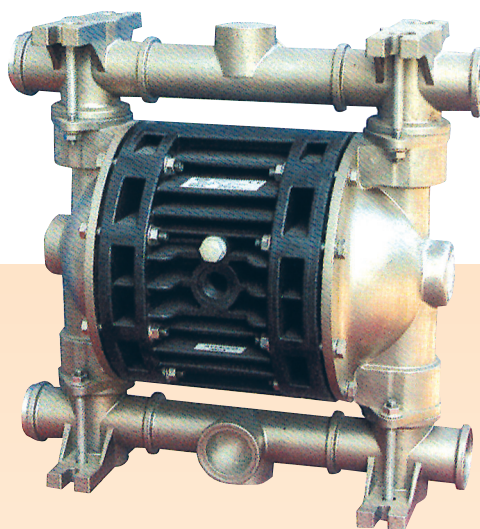
PP



PVDF



ALU



AISI 316

### DATI TECNICI

#### TECNICAL DATA

**BX15**

**BX26**

Attacchi entrata uscita * <i>Inlet outlet*</i>	1"1/4 GAS	1"1/2 GAS	
Attacco aria <i>Air connection</i>	1 / 2" F GAS	1 / 2" F GAS	
Capacità autoadescamento** <i>Max. self-priming capacity**</i>	5 m	5 m	
Portata Max. ** <i>Max. flow rate**</i>	220 l/min	340 l/min	
Prevalenza Max.** <i>Total head**</i>	70 m	70 m	
Pressione Max. alimentazione aria <i>Max. air supply pressure</i>	7 bar	7 bar	
Massimo diametro passaggio ammissibile solidi <i>Max. diameter of passing solids (spherical particles)</i>	5 mm	6 mm	
Mod. <i>Mod.</i>	Materiali di costruzione <i>Construction materials</i>	Peso <i>Weight</i>	Max. operating temp. <i>Max. operating temp.</i>
<b>BX15</b>	PP	12 Kg	60°C
	PVDF	14 Kg	95°C
	Alu	16 Kg	95°C
	Aisi 316	21 Kg	95°C
<b>BX26</b>	PP	16 Kg	60°C
	PVDF	20 Kg	95°C
	Alu	21 Kg	95°C
	Aisi 316	32 Kg	95°C

\* Attacchi flange a richiesta  
*Flanged attacks on request*

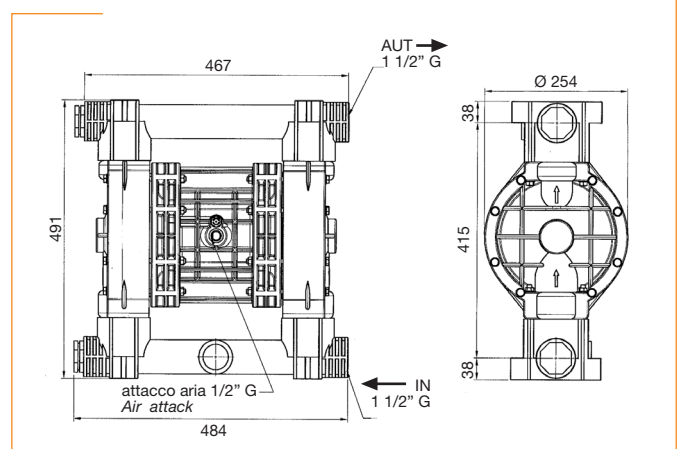
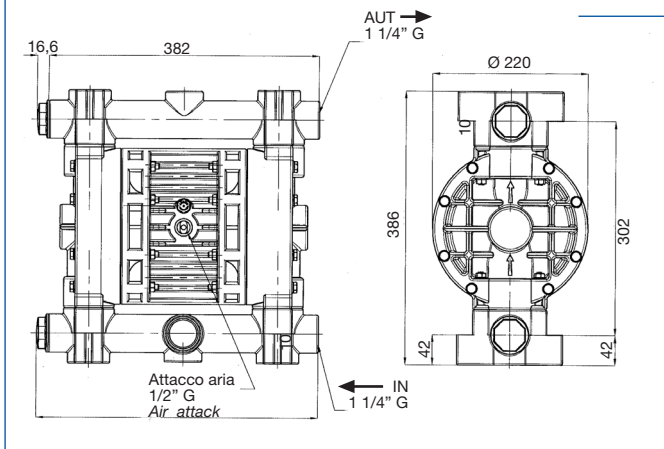
\*\* Dipende dai materiali costruttivi  
*Depends on used material*

# BX15

# POMPE A MEMBRANA DIAPHRAGM PUMPS

# BX26

## DIMENSIONI DIMENSIONS



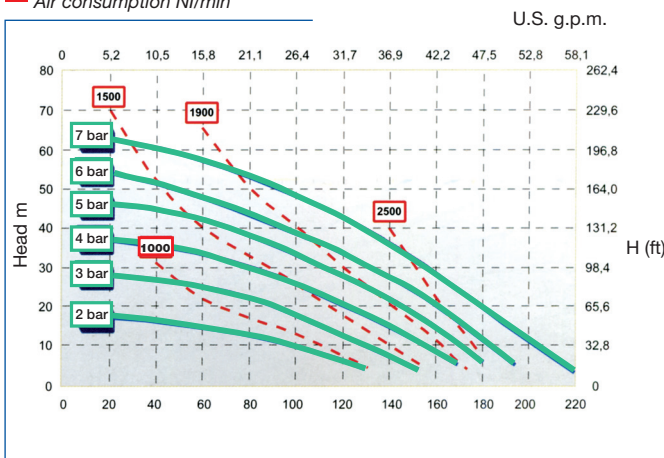
# BX15

## CURVE PERFORMANCE

# BX26

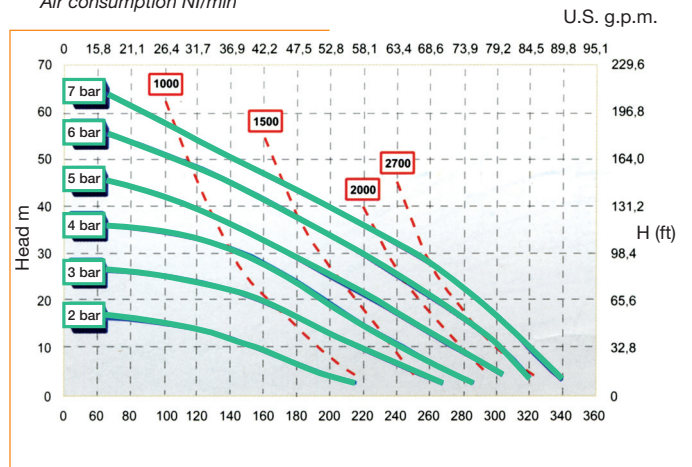
Pressione aria  
Air supply pressure

Consumo aria  
Air consumption NI/min



Pressione aria  
Air supply pressure

Consumo aria  
Air consumption NI/min



### TABELLA MATERIALI

### PUMP MATERIALS

Modello <i>Model</i>	Corpo pompa <i>Pump body</i>	membrana lato aria <i>Membrane (air side)</i>	Sfere <i>Balls</i>	Membrana PTFE <i>Membrane PTFE</i>	Sedi sfere <i>Balls housing</i>	O-ring <i>O-ring</i>	Collettore sdoppiato <i>Twin manifold</i>
<b>BX15</b> <b>BX26</b>	P = PP F = PVDF  AL = Alluminio <i>Alluminium</i>  A = AISI 316 <i>ss 316</i>	N = NBR D = EPDM  H = Hytrel M = Santoprene	T= PTFE A = AISI 316 <i>ss 316</i> C = Ceramica <i>Ceramic</i> G = Vetro <i>Glass</i> N = NBR D = EPDM	T= Quando richiesto  T = <i>When required</i>	P = PP F = PVDF  A = AISI 316 <i>ss 316</i> I = HMW R = PPS-V	D = EPDM V = Viton S = Silicone N = NBR T = PTFE	X = Quando richiesto  X = <i>When required</i>



**lafonte**.eu

P.le Cocchi, 6 - 21040 Veduggio (VA) Italy  
Tel. +39 0332 402168 Fax +39 0332 402169  
e-mail: info@lafontesrl.it - www.lafonte.eu