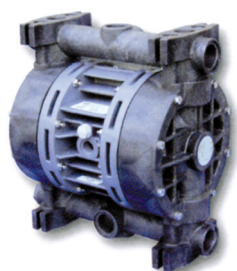


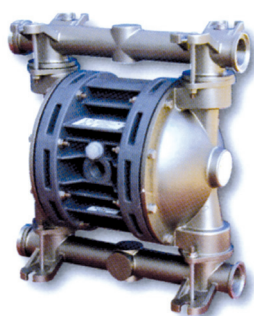
POMPE A MEMBRANA

DIAPHRAGM PUMPS

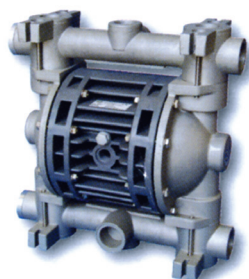
BX09 - BX10



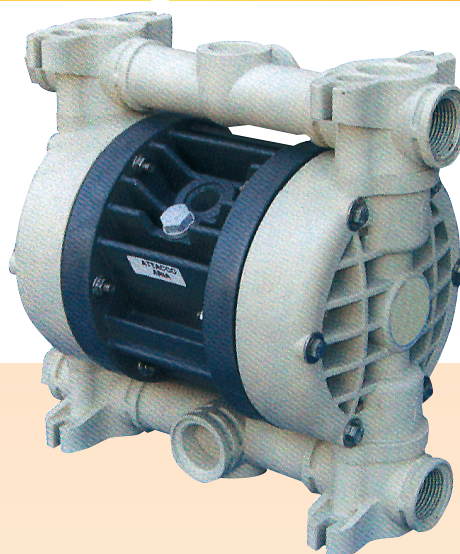
PVDF



AISI 316



ALU



PP

DATI TECNICI

TECNICAL DATA

BX09

BX10

Attacchi entrata uscita *
*Inlet outlet**

1" GAS

1" GAS

Attacco aria
Air connection

3 / 8" F GAS

1 / 2" F GAS

Capacità autoadescamento**
*Max. self-priming capacity***

6 m

5 m

Portata Max. **
*Max. flow rate***

100 l/min

150 l/min

Prevalenza Max. **
*Total head***

70 m

70 m

Pressione Max. alimentazione aria
Max. air supply pressure

7 bar

7 bar

Massimo diametro
passaggio ammissibile solidi
*Max. diameter of passing
solids (spherical particles)*

4 mm

4 mm

Mod.	Materiali di costruzione	Peso	Max. operating temp.
Mod.	Construction materials	Weight	Max. operating temp.
BX09	PP	5 Kg	60°C
	PVDF	6,5 Kg	95°C
	Alu	6,5 Kg	95°C
	Aisi 316	10,5 Kg	95°C
BX10	PP	7,5 Kg	60°C
	PVDF	8,5 Kg	95°C
	Alu	8,2 Kg	95°C
	Aisi 316	11 Kg	95°C

* Attacchi flange a richiesta
Flanged attacks on request

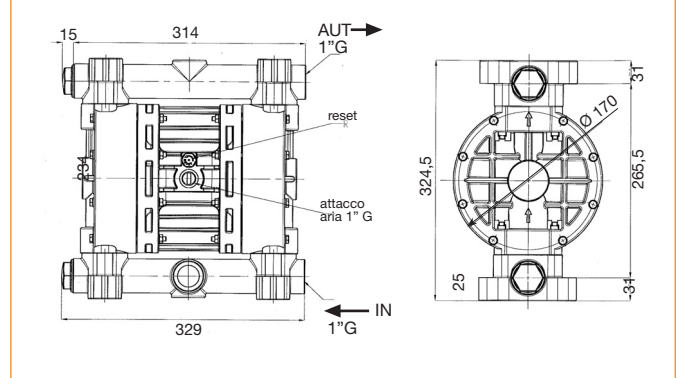
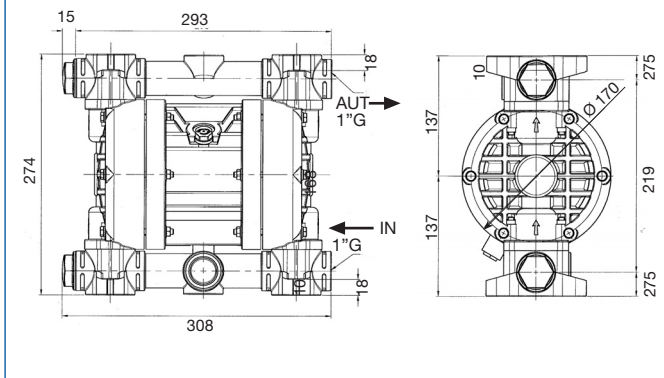
** Dipende dai materiali costruttivi
Depends on used material

BX09

POMPE A MEMBRANA DIAPHRAGM PUMPS

BX10

DIMENSIONI DIMENSIONS



BX09

CURVE PERFORMANCE

BX10

- Pressione aria
Air supply pressure
- Consumo aria
Air consumption NI/min

U.S. g.p.m.

- Pressione aria
Air supply pressure
- Consumo aria
Air consumption NI/min

U.S. g.p.m.

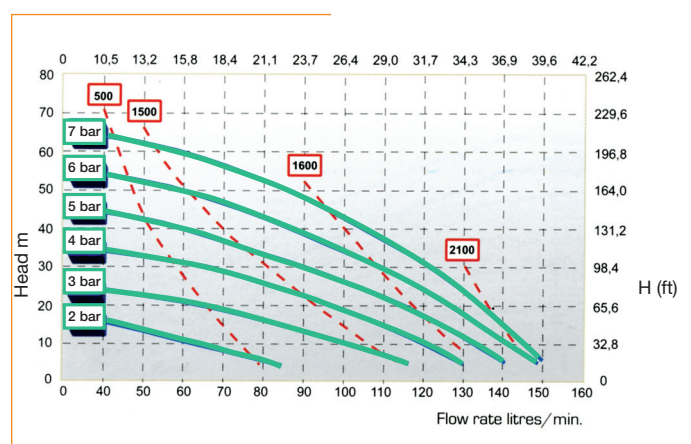
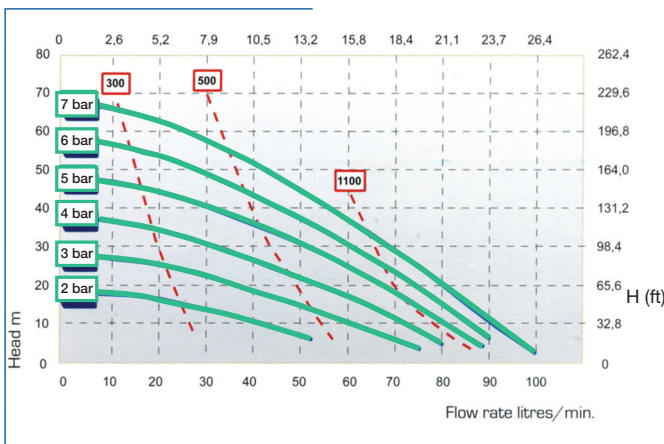


TABELLA MATERIALI

PUMP MATERIALS

Modello <i>Model</i>	Corpo pompa <i>Pump body</i>	membrana lato aria <i>Membrane air side</i>	Sfere <i>Balls</i>	Membrana PTFE <i>Membrane PTFE</i>	Sedi sfere <i>Balls housing</i>	O-ring <i>O-ring</i>	Collettore sdoppiato <i>Twin manifold</i>
BX09 BX10	P = PP F = PVDF AL = Alluminio <i>Alluminium</i> A = AISI 316 <i>ss 316</i>	N = NBR D = EPDM H = Hytrel M = Santoprene	T = PTFE A = AISI 316 <i>ss 316</i> C = Ceramica <i>Ceramic</i> G = Vetro <i>Glass</i> N = NBR D = EPDM	T = Quando richiesto T = <i>When required</i>	P = PP F = PVDF A = AISI 316 <i>ss 316</i> I = HMW R = PPS-V	D = EPDM V = Viton S = Silicone N = NBR T = PTFE	X = Quando richiesto X = <i>When required</i>



P.le Cocchi, 6- 21040 Veduggio (VA) Italy
Tel. +39 0332 402168 Fax +39 0332 402169
e-mail: info@lafontesrl.it - www.lafonte.eu